



GRADE 3

EN 50131-1

**SECURITY - ESSENTIAL PART
OF YOUR BUSINESS**

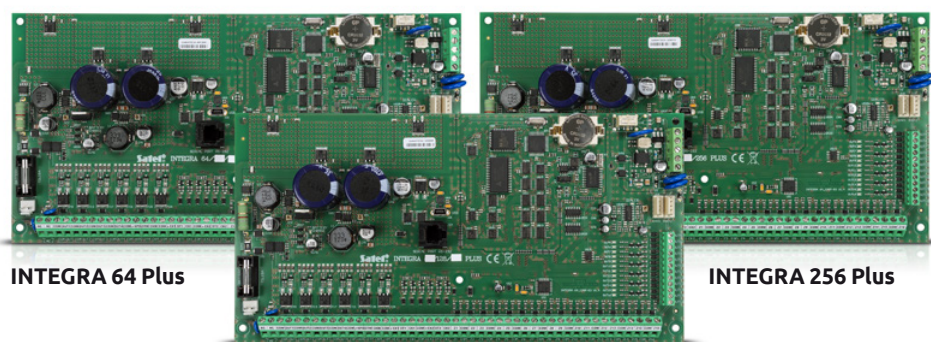
Protection of buildings with a medium to high risk of burglary, especially critical infrastructure facilities, requires a security system that meets the EN 50131-1 criteria for **Grade 3**.

Grade 3 is a measure of the alarm system immunity to the actions of persons which are not authorized to stay within the protected premises. This means that a thorough familiarity with alarm systems and the ability to use specialized tools are needed to disable such security measures.

QUALITY, RELIABILITY, SECURITY

Given their full compliance with the requirements of EN 50131-1 Grade 3, the **INTEGRA Plus** control panels are a perfect choice for creating advanced alarm systems, wherever a special level of security is required.

In addition to detecting and signaling an attempted intrusion or hold-up, these devices also offer simplified access control functions and the ability to implement building automation.

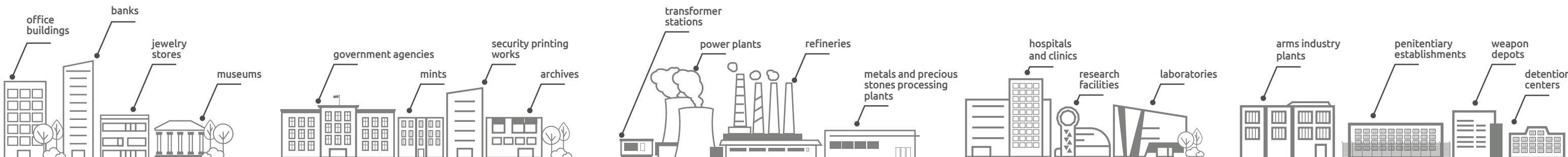


INTEGRA 64 Plus

INTEGRA 256 Plus

INTEGRA 128 Plus

Grade 3 requirements have been developed to ensure security of such facilities as:



Devices of an alarm system meeting the Grade 3 requirements must be characterized by strictly defined properties and have the functions required by the standard.

Keypads

The following models of keypads have double tamper protection and meet the rigorous criteria for resistance to mechanical damage, as required by the standard.

INT-TSI

Keypad with capacitive touch screen and flat design graphical interface. It offers the possibility of viewing images from IP cameras and increasing the maximum number of keypads in the system (up to 16) thanks to the MASTER/SLAVE option. I also allows you to personalize the functionality and appearance of the user interface.



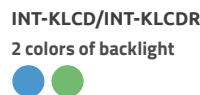
INT-TSG2/INT-TSH2

Keypads with capacitive touch screen. Both devices allow the status screen to be customized to suit the user's needs. They also have the option of triggering FIRE, AUX and PANIC alarms. In addition, the INT-TSG2 has LED indicators of the system state.



INT-KLCD/INT-KLCDR/INT-KLFR

Keypads with the traditional user interface and LCD display. All devices are provided with two zones. INT-KLFR comes with two 3EOL zones.



Partition keypad

INT-SCR

Multifunctional partition keypad with a proximity card reader. If necessary, it allows double verification, based on contactless card and password. The device features double tamper protection.



Detectors

OPAL Pro, AGATE, SLIM-PIR-PRO and SLIM-DUAL-PRO detectors have double tamper protection (against opening and forcible detachment from the wall) and active IR antimasking according to EN 50131-2-4.

Active IR antimasking makes it possible to instantly detect attempts to disable the devices (by covering, taping up or painting over) and send the information to the alarm control panel. Depending on the system configuration, notification of the existing situation may be sent to the user, security agency or appropriate services.

OPAL Pro



2 enclosure colors



AGATE

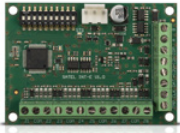


SLIM-PIR-PRO and SLIM-DUAL-PRO



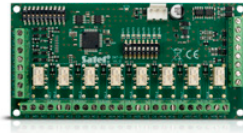
Grade 3 refers only to indoor applications

Expansion modules



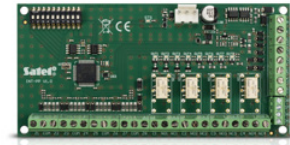
INT-E

The module enables expansion of the system by 8 zones, including 3EOL ones.



INT-O

Expansion module adding 8 OC or relay type outputs to the alarm system.



INT-PP

Zone and output expansion module adding to the system 8 zones and 8 outputs, including 4 OC type and 4 relay type outputs. The device supports 2EOL and 3EOL zones.

Power supply

Backup power supplies ensure uninterrupted operation of the system when the main power supply fails or is not available, even for many hours. In the event of a power failure, these devices provide power from the connected battery.

APS-612

The model is equipped with short-circuit and overload protections. Its output current capacity is 6 A (3 A power supply + 3 A battery charging) and is designed to supply devices operating at 12 V DC.

High energy efficiency, very good power supply parameters, anti-interference filter and active power factor correction (PFC) (up to 0.98) are special advantages of this backup power supply.



Enclosures

The OMI series enclosures will be an ideal choice for Grade 3 installations. They have a solid metal construction and are equipped with solutions that enable detection of tampering - opening or tearing from the ground. This group includes: **OMI-4, OMI-3, OMI-2, OMI-1** with integrated transformer, as well as surface-mounted **OMI-5** enclosure.

Among the plastic enclosure solutions that meet the Grade 3 requirements, the **OPU-3** and **OPU-4 P** models are available, in which you can install wireless devices with their antennas. Both versions have also been equipped with double tamper protection.



Are you interested in the solutions presented in this leaflet?
For more information, please visit: www.satel.eu

The manufacturer reserves the right to change the specification and technical data of devices. Images shown are for general information only and may differ from actual products
U-GRADE3-EN0821